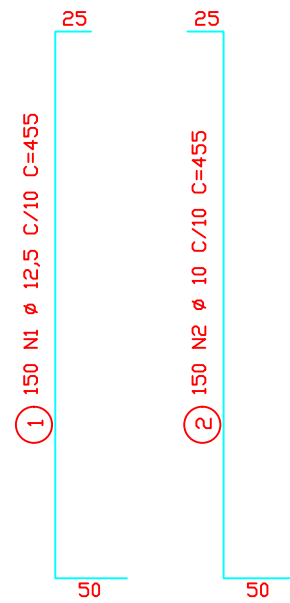
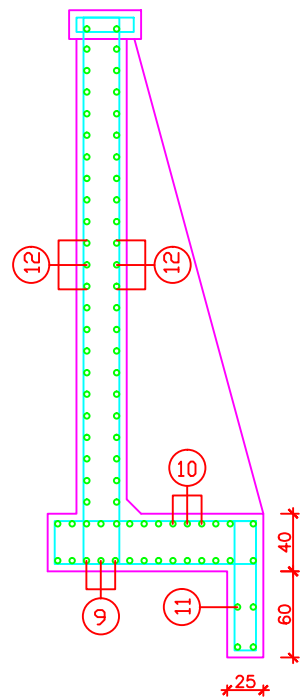
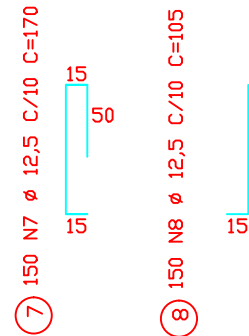


Corte AA'

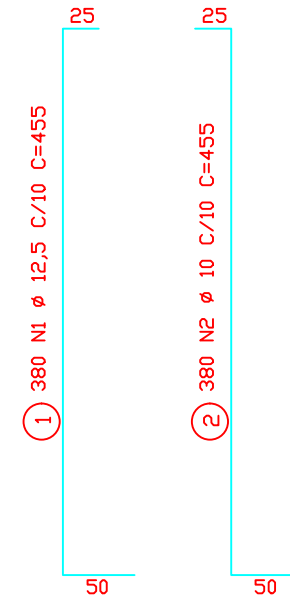
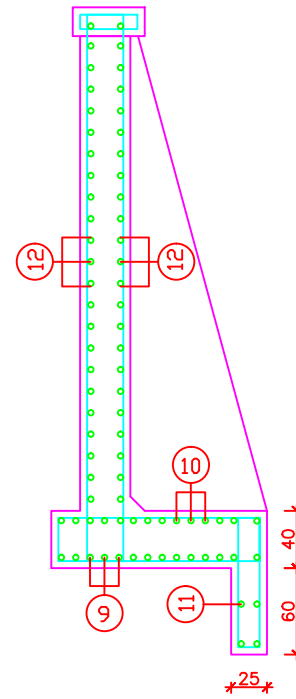


- ③ 150 N3 Ø 8 C/10 C=60  
10 10
- ④ 150 N4 Ø 10 C/10 C=60  
10 10
- ⑤ 150 N5 Ø 12,5 C/10 C=220  
30 50
- ⑥ 150 N6 Ø 10 C/10 C=200  
30 30



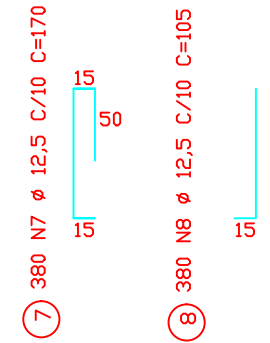
- ⑨ 2x13 N9 Ø 10 C/10 C=800  
TRESPASSE: 50CM
- ⑩ 2x13 N10 Ø 10 C/10 C=800  
TRESPASSE: 50CM
- ⑪ 2x6 N11 Ø 12,5 C/30 C=800  
TRESPASSE: 50CM
- ⑫ 2x2x23 N12 Ø 8 C/15 C=800  
TRESPASSE: 50CM

Corte DD'

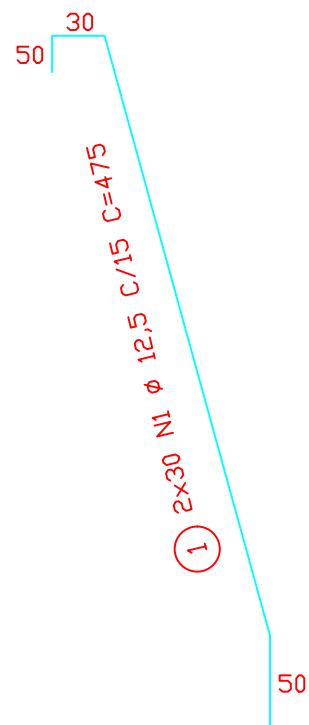
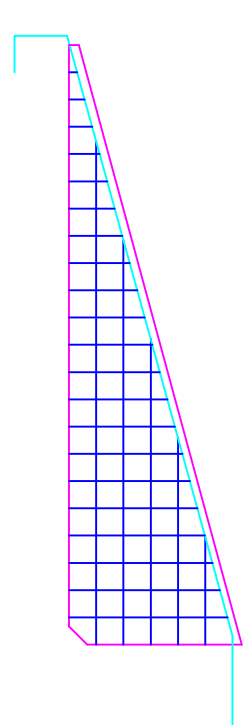


- ③ 380 N3 Ø 8 C/10 C=60  
10 10
- ④ 380 N4 Ø 10 C/10 C=60  
10 10
- ⑤ 380 N5 Ø 12,5 C/10 C=220  
30 50
- ⑥ 380 N6 Ø 10 C/10 C=200  
30 30

- ⑨ 4x13 N9 Ø 10 C/10 C=1000  
TRESPASSE: 50CM
- ⑩ 4x13 N10 Ø 10 C/10 C=1000  
TRESPASSE: 50CM
- ⑪ 4x6 N11 Ø 12,5 C/30 C=1000  
TRESPASSE: 50CM
- ⑫ 4x2x23 N12 Ø 8 C/15 C=1000  
TRESPASSE: 50CM



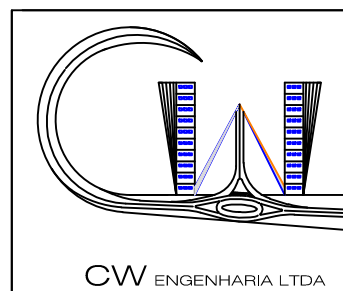
Contraforte



- ② 5x30 N2 Ø 6,3 C/15 C=VAR.  
TRESPASSE: 50CM

- ③ 21x30 N3 Ø 6,3 C/15 C=VAR.  
TRESPASSE: 50CM

Obs.: ENGASTAR AS BARRAS NA ARMADURA DO MURO.



PREFEITURA MUN. DE CARLOS GOMES - RS

ASS. PREFEITO MUNICIPAL:

EGIDIO MORETO

ASS. RESP. TECNICO:

CIBELE SERAFINI - CREA RS 183.912

LOCAL:  
AVENIDA PADRE ESTEVÃO VONSOSKI

ESCALA:  
1/1000

ÁREA:  
-

DATA:  
DEZEMBRO/ 2017

PRANCHA:  
MURO DE CONTENÇÃO - ARMADURAS

PRANCHA Nº:  
02